

Fire Control Panel FS5200



The Fire Control Panel FS 5200 is a modern, highly reliable, multifunctional and versatile unit, providing the user with unexpected potential in the design, installation and operation of conventional fire alarm systems.

The FS5200 is certified by EVPU.

**MORE THAN 10 DISPLAY
LANGUAGES AVAILABLE**

Technical features

Fire detection lines (8, 16, 24 or 32):

- Maximum number of fire detectors in a line: 32
- Connecting line type: two-wire
- Maximum resistance of a line: 100 Ω

Monitored fire alarm lines (EN54-2, type C):

- Type: potential
- Electrical characteristics: (24±5)V/500 mA

Common fire relay outputs (2, 10 or 5):

- Type: potential free, switching
- Electrical characteristics: 3 A/125 V AC;
3 A/30 V DC

Common fault warning relay outputs:

- Type: potential free, switching
- Electrical characteristics: 3 A/125 V AC;
3 A/30 V DC

Indications of registered events:

- Light indication: LEDs
- Text messages: LCD display – 4 lines,
20 symbols
- Sound: Built-in buzzer

Access levels to control functions:

- 4 (in compliance with EN 54/2)

Power supply:

- Mains: 220/230 V
- Frequency: 50 Hz

Backup batteries:

- 2 x 12 V / 12 Ah

Operation in duty mode upon interrupted mains supply:

- Minimum configuration: 80 h
- Maximum configuration 30 h

Consumption on backup batteries supply in duty mode at 24 V:

- Minimum configuration: <155 mA
- Maximum configuration: <400 mA

Power supply to external devices:

- Voltage: (24±5)V
- Maximum output current (current of controllable outputs included): 1,5 A

Weight (backup batteries not included): 6,6 kg

Dimensions: 450 x 355 x 115 mm

Operating temperature: -5 °C to +40 °C

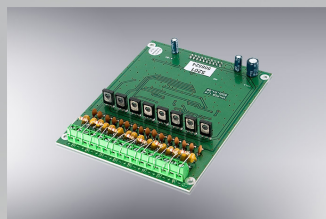
Relative humidity: to 93%

Degree of protection: IP 40

Functional data:

- Automatic reset of the fault warning condition
- Logical “AND” scenario for fire detection lines
- Fully programmable from the display user-friendly menu structure
- Modular fire alarm panel with optional modules for fire detection lines and fire alarm lines
- Optional scenarios for common fire outputs and fire alarm outputs
- Compatible with third party fire detectors with the zone-individual programmable threshold current values
- Real time clock and Event log of 2500 events

Extension modules



Extension module 5201

- 8 fire detection lines



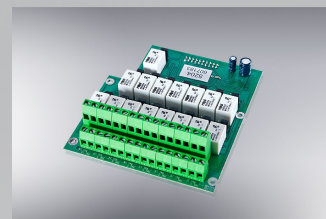
Extension module 5202

- 8 fire detection lines
- 1 monitored fire alarm line



Relay extension module 5203

- 8 common fire relay outputs



Relay extension module 5204

- 16 common fire relay outputs

Interface module RS232/485

Provides communication between fire alarm control panels types FS5100, FS5200 and FS4000 with repeater type FS5200R products of UniPOS.

Possible configurations

FS 5200:

- 8 fire detection lines
- 1 monitored fire alarm line
- 2 common fire relay outputs

FS 5200 + 5201:

- 16 fire detection lines
- 1 monitored fire alarm line
- 2 common fire relay outputs

FS 5200+5201+5202:

- 24 fire detection lines
- 2 monitored fire alarm lines
- 2 common fire relay outputs

FS 5200+5201+5202+5203:

- 32 fire detection lines
- 2 monitored fire alarm lines
- 2 common fire relay outputs

In each one configuration it is possible to add just one module 5203 or 5204.



Office building UniPOS,
1 Efr. Nikola Paskalev Str., Mladost 1, Sofia 1748, Bulgaria
Phone: +359 2 97 439 25, +359 2 97 444 69

47 San Stefano Str., Pleven 5800, Bulgaria
Phone: +359 64 891 100

<http://unipos-bg.com/>